



TRansition paths to sUustainable legume-based systems in Europe

Carbon Footprint reduction of dairy systems

Iris Nonhebel and James Humphreys

Teagasc, Livestock Systems Research Department, Moorepark, Fermoy, Co. Cork, Ireland

Objective

Implementing best practices to reduce the Carbon Footprint of milk production, whilst maintaining output & profitability.

→ To what extent can the Carbon Footprint be reduced?

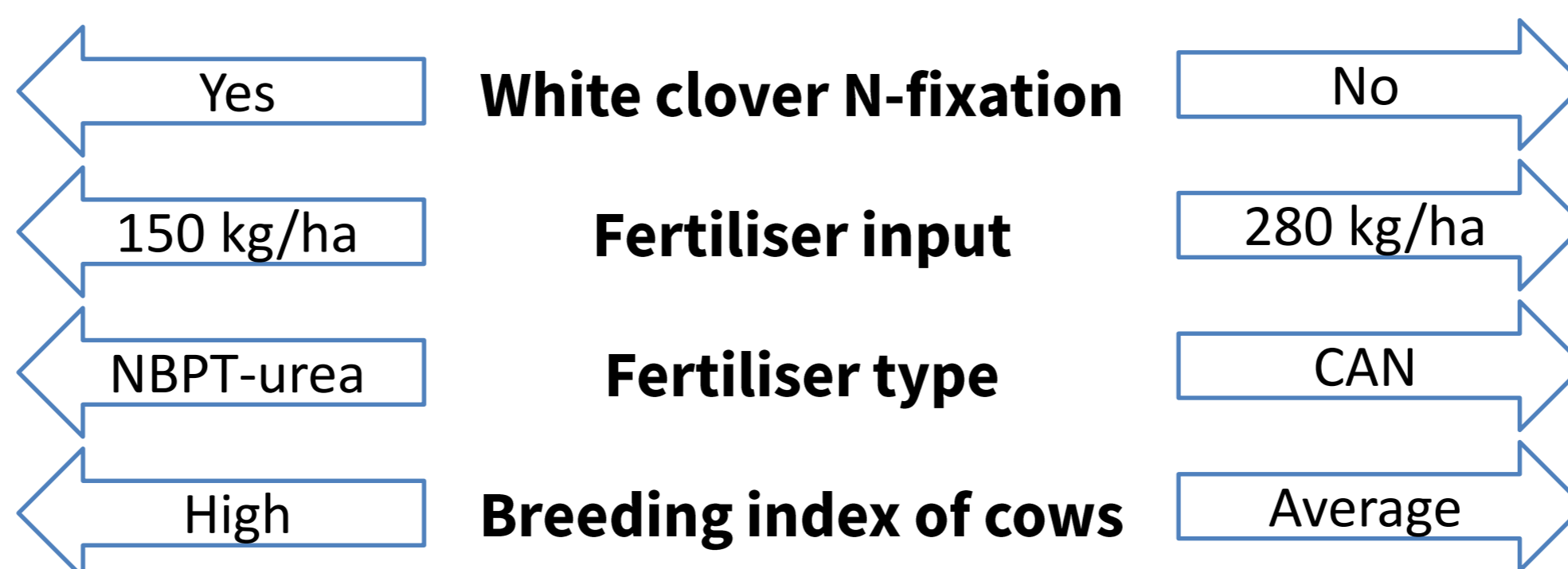
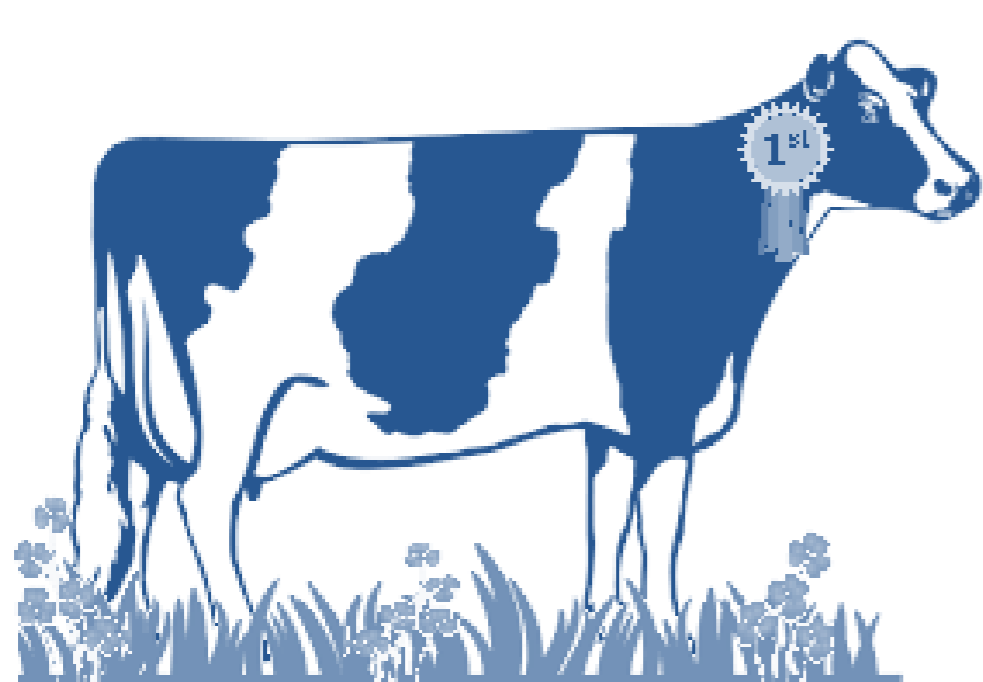


System description

Data collection of two groups (LC & CG) of 24 cows at Solohead farm, Co. Tipperary between 2017 and 2019



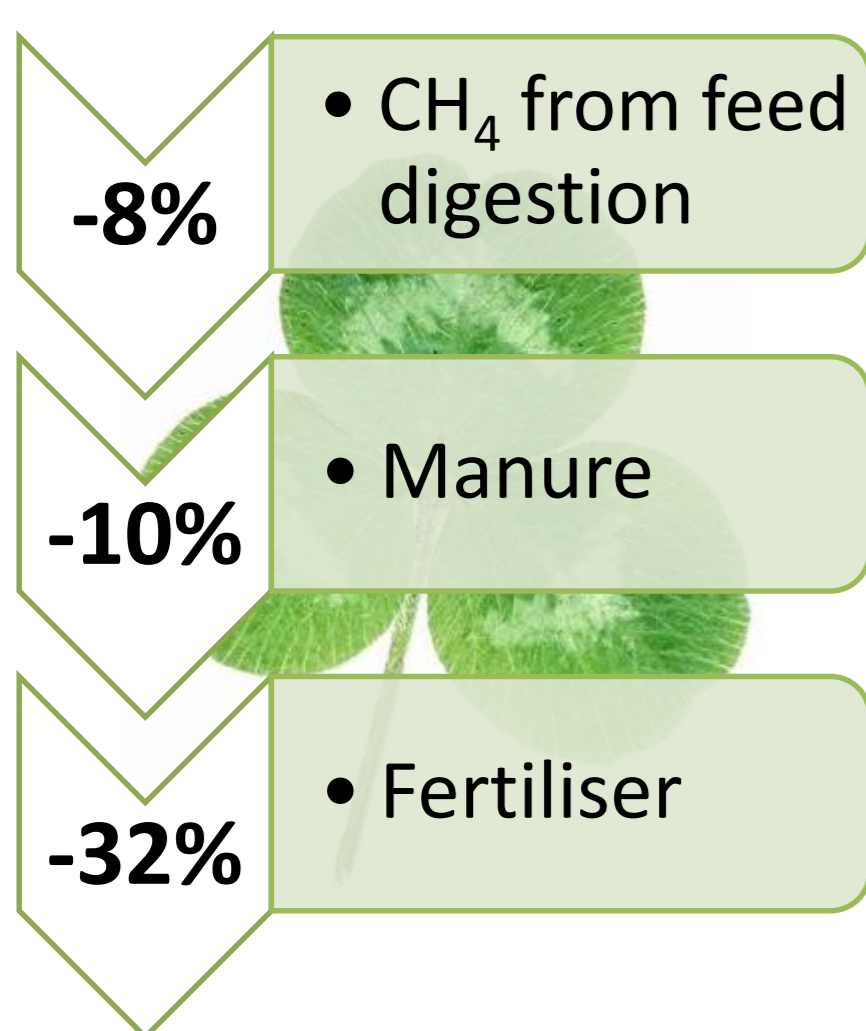
Low Carbon system



Control group



Fig 1: CF-reduction of LC compared to CG per category



Results of 2017

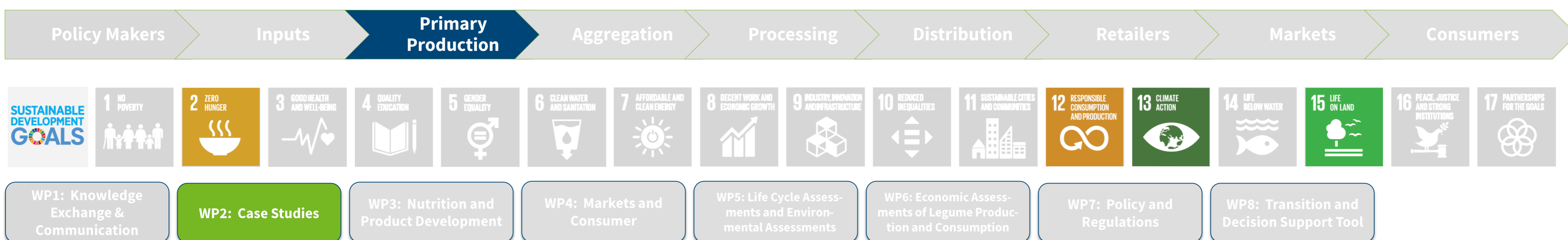
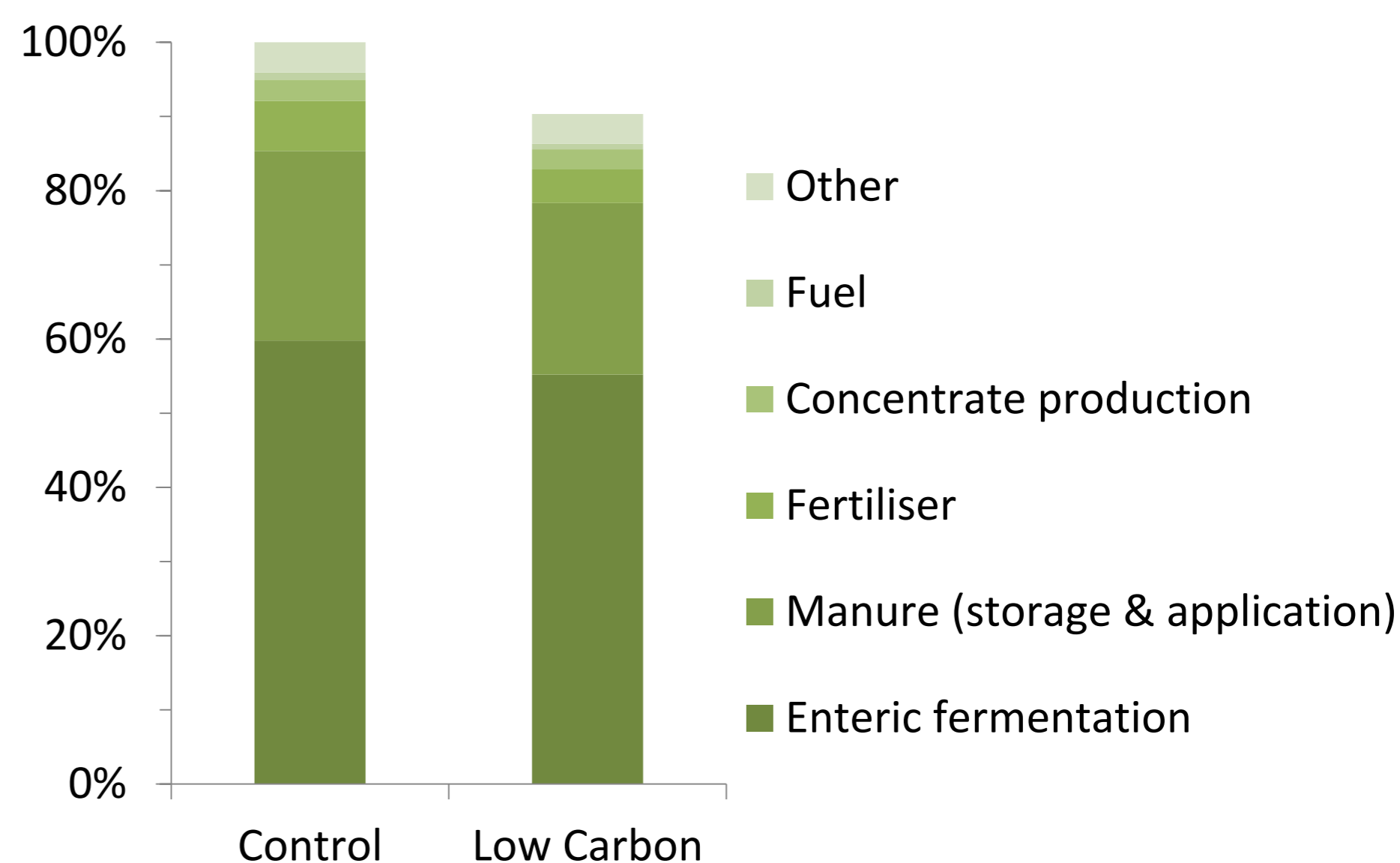
Low Carbon system:

- 10% reduction of CF compared to control

LC also resulted in:

- Higher milk yield ***
- Extended grazing days ***

Fig 2: Contribution to CF per impact category



Contact Information

Iris Nonhebel, Teagasc Moorepark
 E-mail: iris.nonhebel@teagasc.ie
 James Humphreys, Teagasc Moorepark
 E-mail: james.humphreys@teagasc.ie



TRUE has received funding from the European Union's Horizon 2020 research and innovation programme under Grant Agreement N°727973

www.true-project.eu

