



TRansition paths to sUustainable legume-based systems in Europe

Teagasc Clover Group

Dan Clavin¹ and James Humphreys²

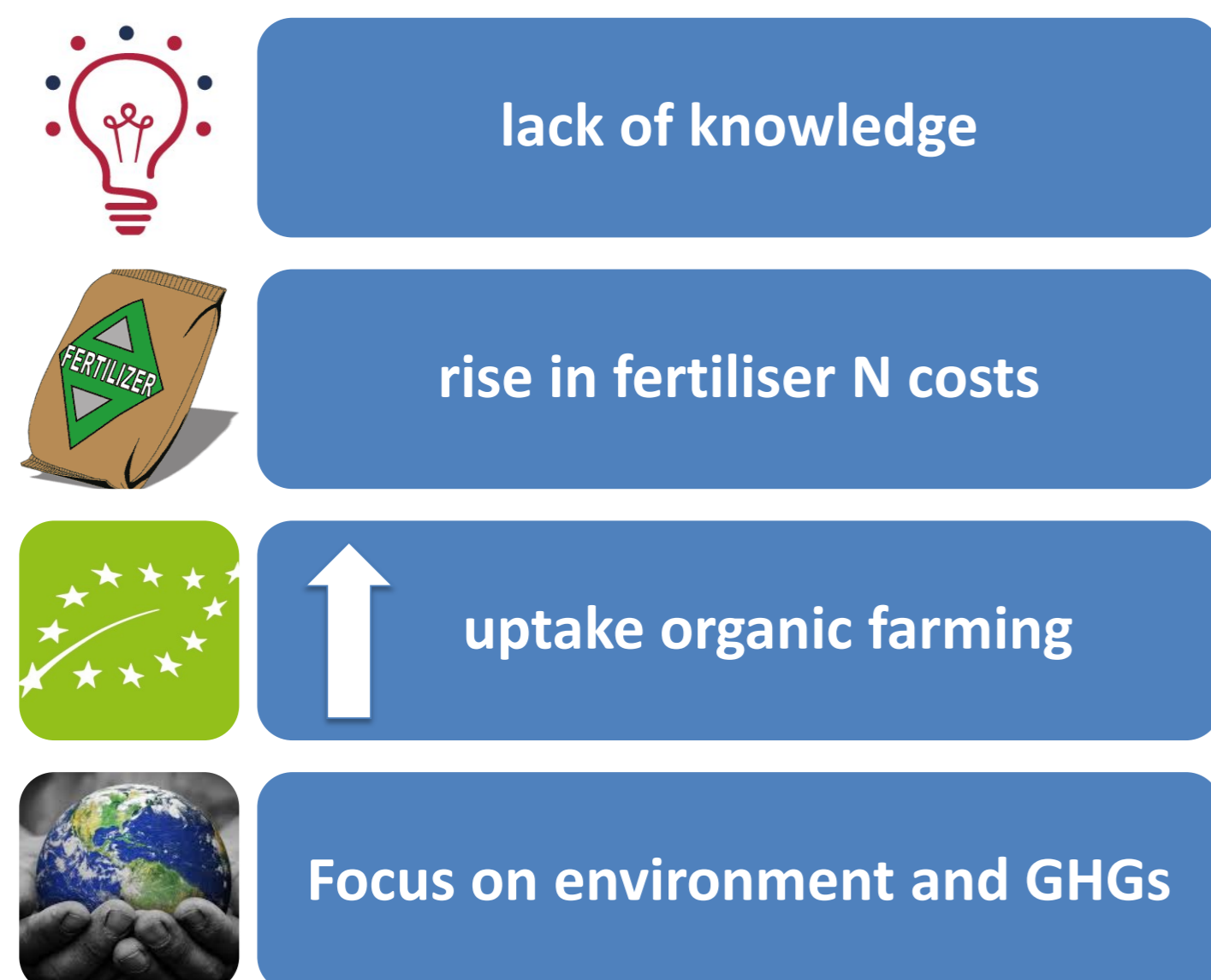
¹Teagasc, Farm Management and Rural Development Department, Athenry, Co. Galway, Ireland

²Teagasc, Livestock Systems Research Department, Moorepark, Fermoy, Co. Cork, Ireland

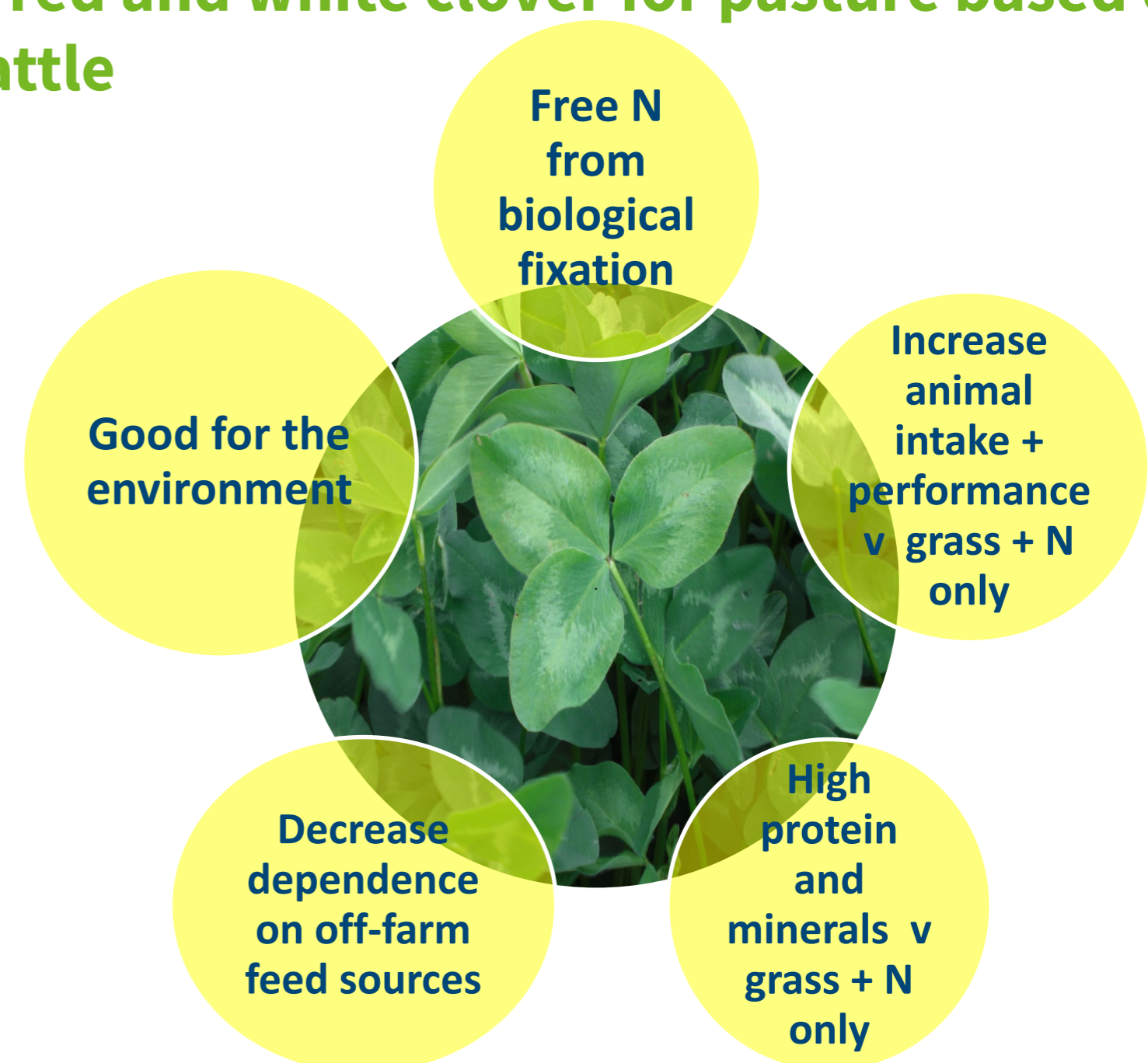
Introduction

To promote the wider use of legumes on grassland farms eight high caliber organic dairy and/or beef farmers have been selected as demonstration farmers to disseminate the potential of and new approaches to legume use on their farms. These demonstration farmers are supported by Teagasc specialists. The demonstration farms are also the hub of eight grassland discussion groups to promote the wider use of white and red clover on farms. These discussion groups benefit from the peer-to-peer farmer learning experience through visiting each other's farms. These visits are facilitated by a Teagasc advisor.

Why are we interested?



Benefits of red and white clover for pasture based dairy and beef cattle

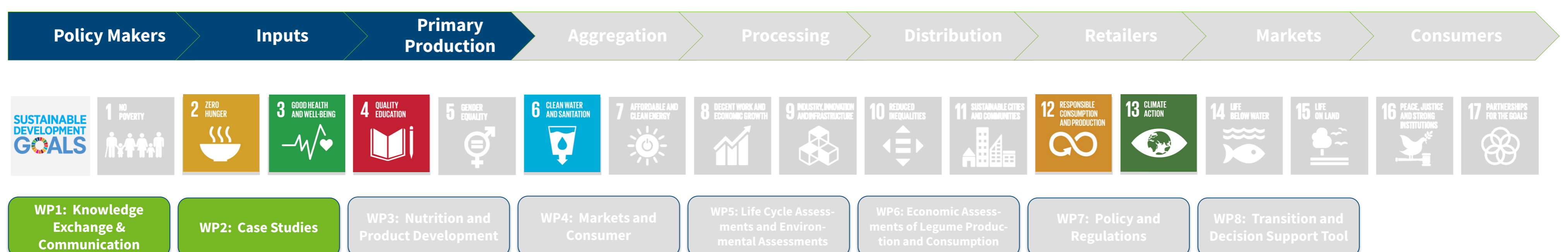


Spreading the message



Economic appraisal

As a demonstration farm, farmers keep accurate records of activities on the farm and host farm walks including visiting discussion groups. Data on the economic performance of farms are collected from these farms by advisors and farm surveyors on an annual basis.



Contact Information

Dan Clavin, Teagasc Athenry
 E-mail: dan.clavin@teagasc.ie
 James Humphreys, Teagasc Moorepark
 E-mail: james.humphreys@teagasc.ie



TRUE has received funding from the European Union's Horizon 2020 research and innovation programme under Grant Agreement N°727973

www.true-project.eu

